



The Autograf.

A Publication of the Mississippi Valley Region of the AACA



www.mvr.aaca.com

January 2025

PRESIDENT'S MESSAGE

1-2025 Notes of Interest

We have held our first Board Advanced Planning Meeting of the year and all the months are accounted by Board members to host an activity. We will also post area meets that our members typically attend year after year so we don't have conflicts. The goal is to have more than one activity a month to provide more club opportunities for us to get together. Board members are planning some new events that we have not had in the past so check them out. They can be found in your Autograf. There may also be last-minute activities that you will find in your E-mail along with reminders.

We are always seeking new ideas and many were provided at the November Banquet. You can always contact any of us with your ideas and if you would like to host an activity. We are always available to assist.

This month we have our club booth the Rod & Custom show that Mike Flaherty is hosting. We will have 4 original club cars in our display among the Hot Rods. We typically get a crowd looking at the original cars. The display is located as last year, across from the concessions.

Next month we will have the annual Show and Tell hosted by Jan Brewer. Be thinking about something of your interest you may want to bring. It does not have to be auto related!

A last note is for you to aid our club in the required reporting we do on our members for the AACA National. Please check that you have renewed your AACA dues along with MVR dues before the end of this month so we can turn in our report to them. It's due January 31st.

John



UPCOMING MVR EVENTS

JANUARY

The MVR will once again have a booth at the Annual Rod & Custom Show. Come visit us at the XPO in east Moline!

Friday, January 17 - 1pm-8pm

Saturday, January 18 - 10am-8pm

Sunday, January 19 - 10am-3pm

FEBRUARY

Show and Tell, February 15th, Saturday at 11:30 a.m.

Hickory Garden Restaurant

3311 Hickory Grove Rd, Davenport

We will be ordering from the menu.

Please bring along and share something that is special, interesting, or just fun to share. It does not have to be car related as we all have other interests and hobbies. Hope to see a nice turnout and a enjoy a delicious lunch in the warmth of friendship!

Any questions, call Jan Brewer 563-340-8516.

MARCH

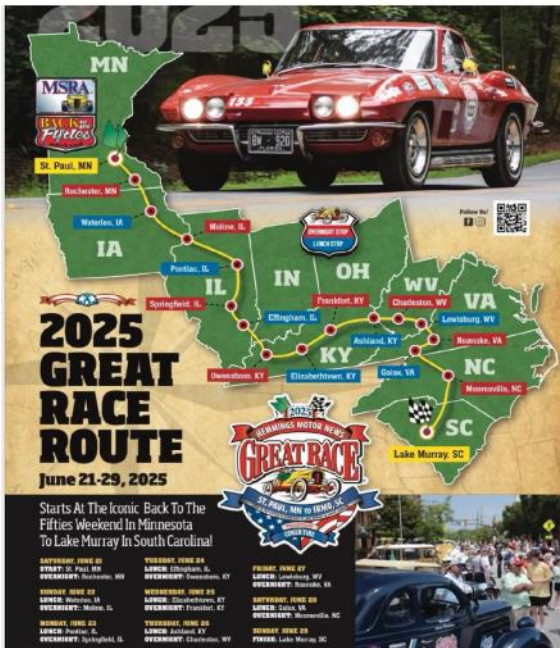
TBA

APRIL

The club will host a joint show with the Railroad Heritage of the Midwest museum at the old Rock Island Lines shop in Silvis, IL. The event is Saturday the 26th. More information to follow.

In case you haven't heard, [Great Race](#) will be heading through the Quad Cities in 2025!

... See more



2025 GREAT RACE ROUTE
June 21-29, 2025

Starts At The Iconic, Back To The Fifties Weekend In Minnesota To Lake Murray In South Carolina!

SATURDAY, JUNE 21 STARTS AT THE ICONIC, MINNAPOLIS, MN	TUESDAY, JUNE 24 LAKE CHARLES, LA	FRIDAY, JUNE 27 LAKE CHARLES, LA
SUNDAY, JUNE 22 LAKE CHARLES, LA	WEDNESDAY, JUNE 25 LAKE CHARLES, LA	SATURDAY, JUNE 28 LAKE CHARLES, LA
MONDAY, JUNE 23 LAKE CHARLES, LA	THURSDAY, JUNE 26 LAKE CHARLES, LA	SUNDAY, JUNE 29 LAKE CHARLES, LA

The graphic includes a map of the Great Race route across the Midwest and South, a red classic car, and a QR code for more information.





Early Winter driving scenes from John Brewer.



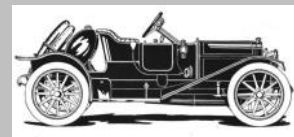
2025 MVR Dues are due!

Currently 75 Members have paid their 2025 local club dues.

Each year our club has to forward a list of paid members to the National.

Please have your membership paid by **January 31st to stay on the MVR ACTIVE ROSTER.**

Eric L. Smith Antique Autos



Specializing in Restorations of 1930 & Earlier

815-535-1367 1958els@gmail.com

Over 40 Years Experience

How to use Bing Maps to plan an antique automobile tour.

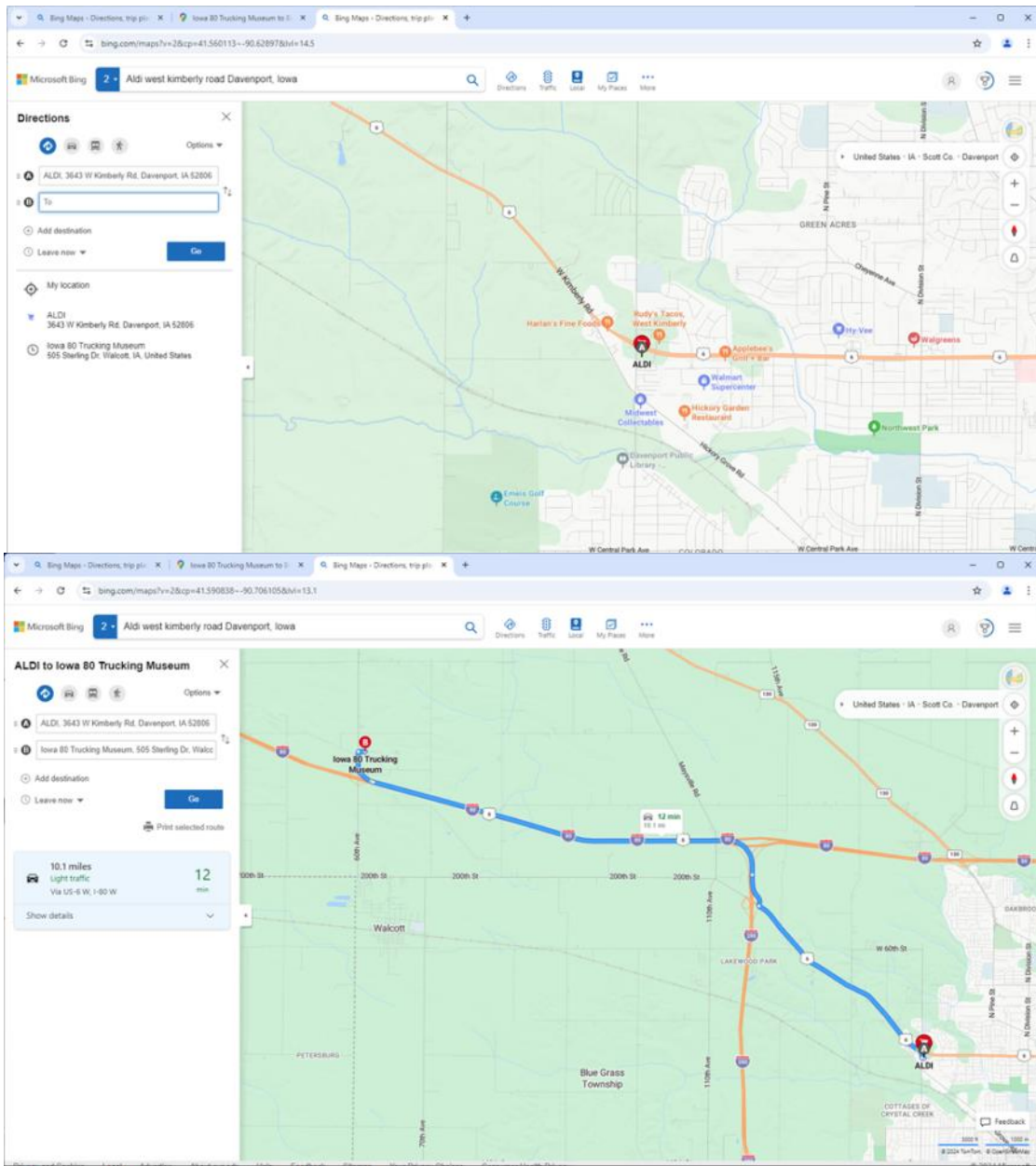
By Mike Flaherty

A couple of months ago I planned a local summer tour for the Mississippi Valley Region of the AACA with the Bing Maps web application. Bing Maps made planning the trip much easier than planning it by hand. It allows users to put in a start and endpoints, then pull the route to desired roads and add waypoints. The application allows users to plan a route, switch between satellite and map views, look at mobile camera street views, make edits to planned paths and easily share the final path with other drivers. The map view also has a slight shaded relief added to it, so you can spot where the hills and bluffs on the trip path are.

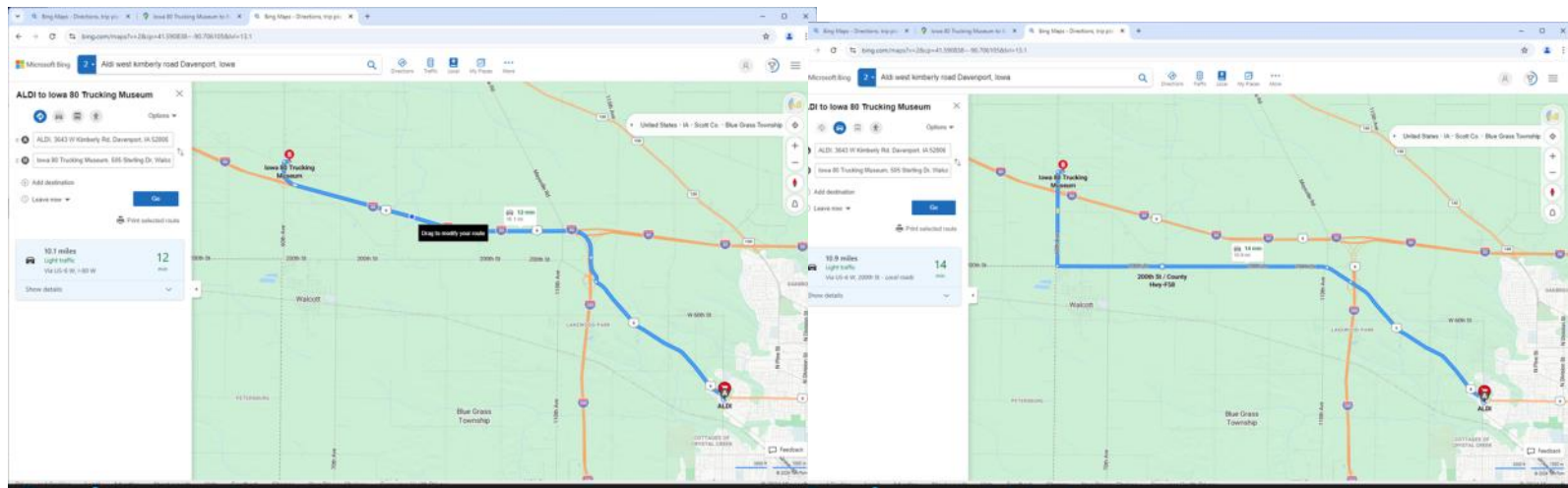
Google Maps has a similar application that also includes a shaded relief terrain view of the path, but it wanted me log into the app, and I didn't have my password handy, so I ended up planning the path for the tour in Bing Maps instead. Both tools are excellent planning tools for antique car tours.

The Google Maps application is available at: <https://maps.google.com/>
The Microsoft Bing Maps application is available at: <https://www.bing.com/>
Here are my directions for using Bing Maps to plan my tour on my PC.

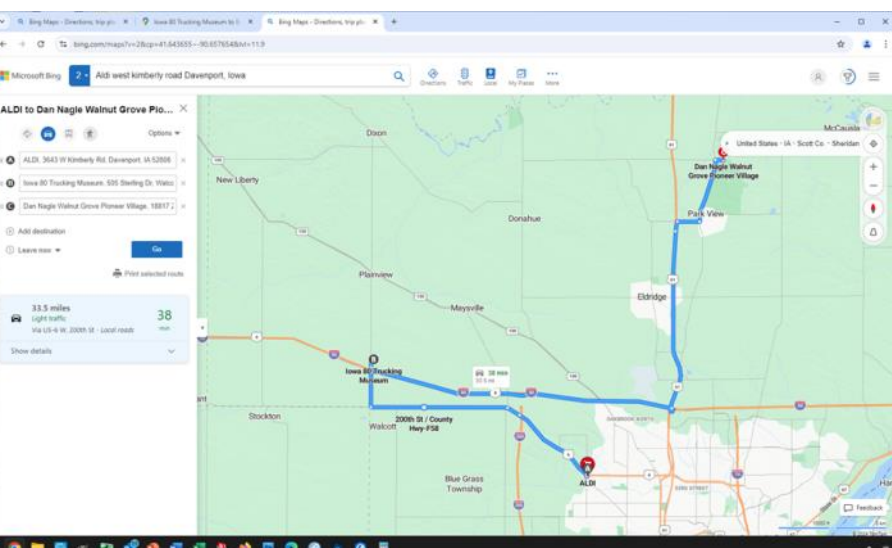
I started my tour on a side street behind the parking lot of the local Aldi grocery store. I entered the address for the grocery store, and then the address for the first stop, the Iowa 80 Truck Museum. Bing found the addresses by doing a web search on the names I entered and then automatically entered them.



I didn't want to drive my 1914 Ford Model T on Interstate 80, so I grabbed the path with my mouse and left clicked on the route with my mouse, and dragged the path down to 200th Street, and released the mouse click. The path then moved down to the new route and recalculated the driving directions.



The new path is a little longer, but much safer and had great views of the flat fields of corn and soybeans outside Walcott, Iowa.

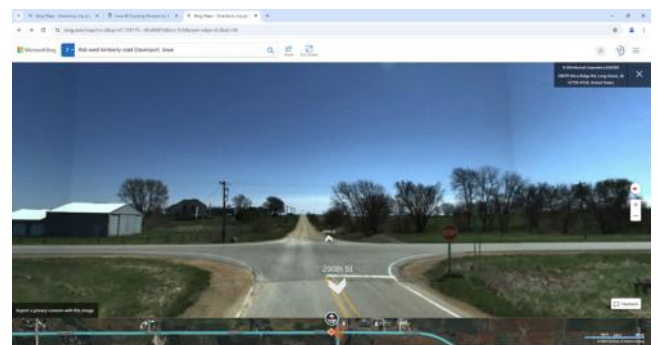
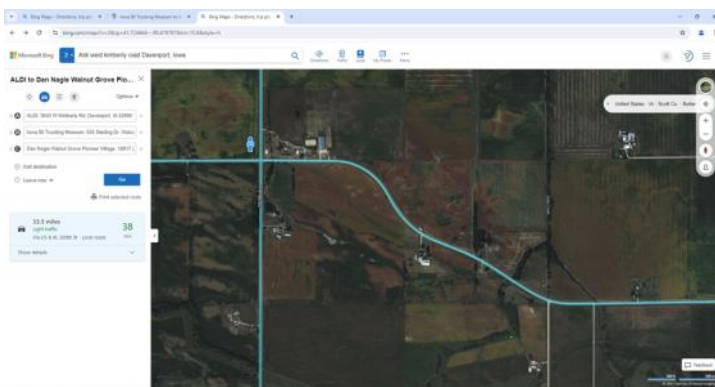


The next step was to add the stop to the Dan Nagle Pioneer Village near Scott County Park.

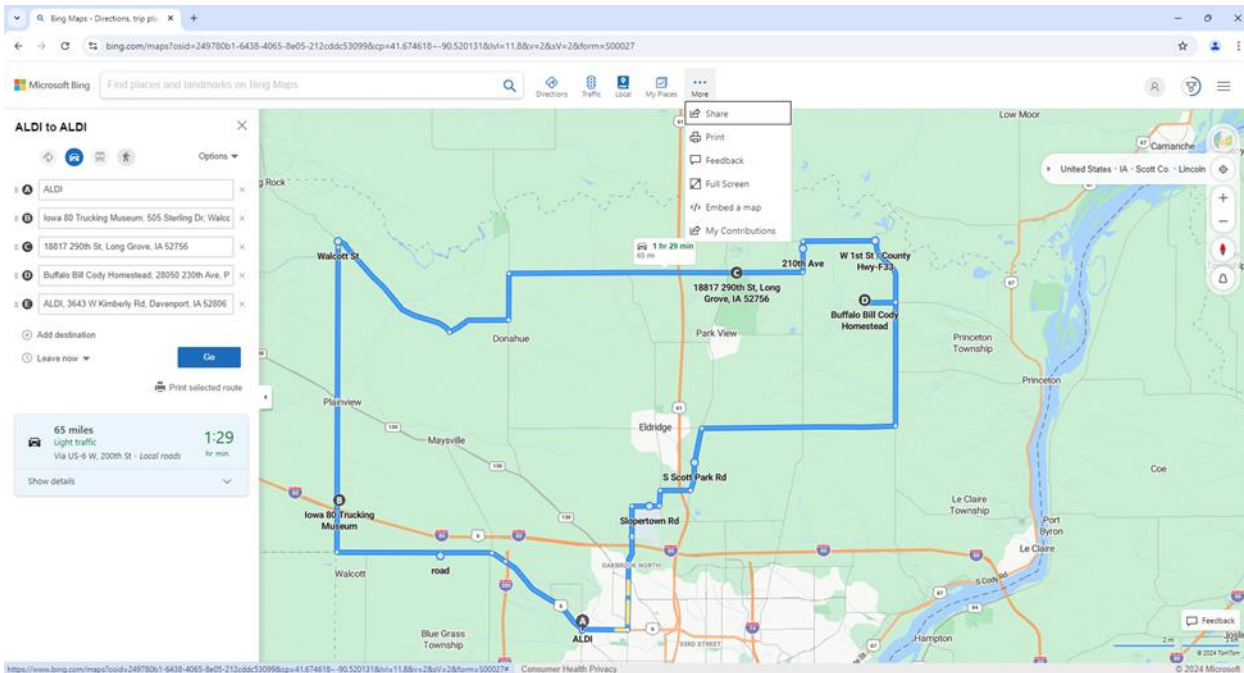
This path also had problems. It wanted me to travel on Interstate 80 and on US 61, both primary highways, not ideal for Model T tours. So again, I left clicked on the path and dragged the route to rural road, running through Dixon, Iowa. This path moved the drive through the scenic rural farm land in Scott County, Iowa and avoided gravel roads. If users select the wrong dragged path, just hit the back button on the top of the browser window and application reverts back to the old path. Users can then attempt to move the line again.

The next stop was the Buffalo Bill Cody Homestead.

This time the path was on a gravel road, that I wanted to avoid. I double checked the road surface by changing views to the street view and zooming in to the intersection where I thought the gravel started. The street view can be displayed by dragging the blue viewer icon to the desired road intersection and then rotating the view of the intersection.



I then saved the route to share it to tourists by selecting the Share option from the ... (more) pull down menu:



Users can then copy or email the path and text it or email it to other users.

Tourists can then download the driving directions and view the path on their cell phones or digital devices.

I was originally going to add an additional stop in LeClaire, but noticed the mileage of the tour, and wanted to keep the tour around 60 miles instead of 80 or 90. The route distance calculator was really helpful.

I did also print out the driving directions provided by Bing, and physically drove the route as planned. The directions were great, but I did find some missing road signs at intersections, and street names that didn't match the names in the driving directions. So, it is still helpful to drive the route, especially for summer road construction season.

My experience with Bing Maps was great! I recommend it to anyone wanting to plan a local trip in the Suburban Quad Cities. Less traveled parts of the country might not have the street view information, but will likely have current road and satellite imagery.

Happy Planning!

Mike Flaherty



2026 Midwest Tour

The Mississippi Valley Region is planning on hosting a DIVISIONAL Tour in 2026. Touring is a great way to bring National members to our region to enjoy our vehicles without the stress of setting up a show.

Divisional Tours are three day events designed to draw more AACA members into touring as the hosting club can establish almost any criteria for their tour. The MVR has opted to have our tour open to all years of AACA eligible vehicles. We will have three days of touring with the first two days offering different routes to tour broken down by vehicle age. The last tour day will encompass the entire group.

We are in the early planning stages of the event and are seeking club members to volunteer in the planning. We will need members to fill the following tour positions,

- Registration
- Finance
- Routes and Events
- Meals



MVR Officers

PRESIDENT

John Brewer
800 Idaho Avenue
Davenport, IA. 52804
563-370-6902
jwbrew15@aol.com

VICE PRESIDENT

Scott Johnson
25967 Angel Ferry Road
Geneseo, IL. 61254
309-502-1825
scottjohnson309@gmail.com

TREASURER

Kathy Etheridge
PO Box 24
Lynn Center, IL. 61262
309-781-5585
kathystu67@gmail.com

SECRETARY

Clair Pearson
8522 55th Street
Coal Valley, IL. 61240
309-737-0581
nspsc103@aol.com

MVR Board of Directors

Eric Smith
1104 #606
Bettendorf, IA. 52722
815-535-1367
1958els@gmail.com

Mark Lousberg
5101 11th Avenue A
Moline, IL. 61265
309-373-2169
mplousberg@hotmail.com

Michael Flaherty
2116 W. 45th Street
Davenport, IA. 52806
314-968-8574
Flaherty_michael@sbcglobal.net

Stu Etheridge
PO Box 24
Lynn Center, IL. 61262
309-781-5585
kathystu67@gmail.com

Justin Landwehr
justin@justinlandwehr.com

Jan Brewer
800 Idaho Avenue
Davenport, IA. 52804
leesonrifd@aol.com

MVR Committee Chairs

SUNSHINE

Sharon Hoaglund
3641 8th Street Court
East Moline, IL. 61244
309-755-4906

HISTORIAN

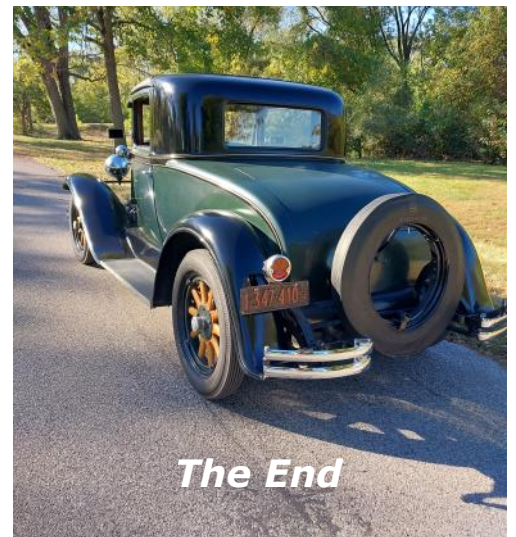
Gary Gleason
123 Short Street
Bettendorf, IA. 52722
563-386-4649
glgleason@aol.com

WEBMASTER

Dwayne Cedarblom
563-210-1965
dwaynec48@gmail.com

AUTOGRAF

Mark Lousberg
5101 11th Avenue A
Moline, IL. 61265
309-373-2169



The MVR newsletter is published on the fifteenth of the month.

Autograf submissions should be sent to Mark Lousberg, (mplousberg@hotmail.com) by the twelfth of the month to be included in the next publication.